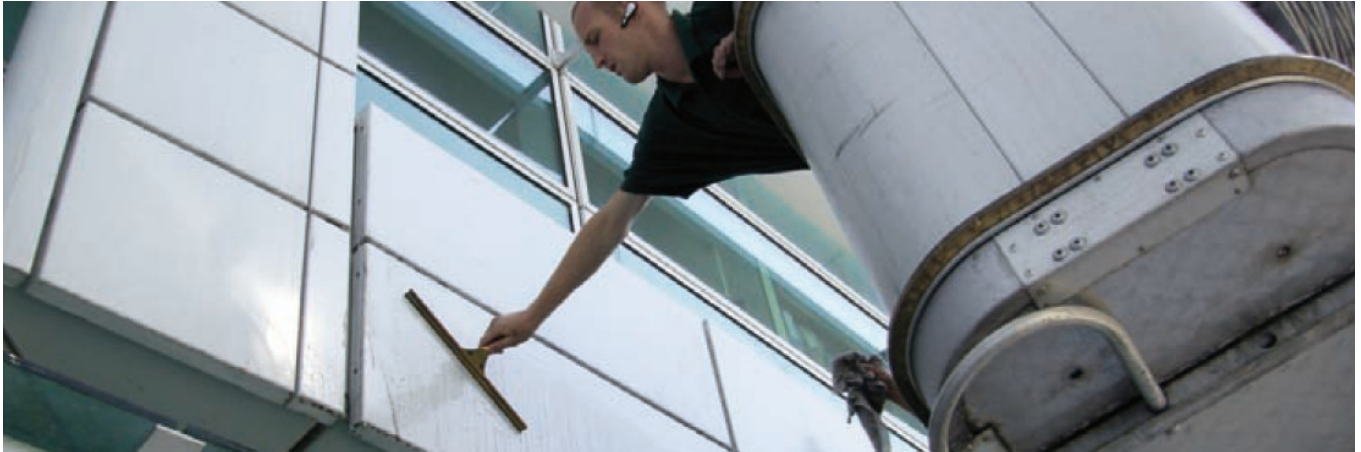


Please note that the specifications above may vary depending on the paint supplier, the product and quality of the primers & colours, as well as the coating plant (wet paint and powder). These specifications have been compiled to the best of our ability and expertise. We assume no responsibility for changes or errors.

5. Cleaning and maintenance of colour-coated surfaces



CLEANING AND MAINTENANCE OF POWDER COATINGS:

Clean normal amounts of dirt from units using a damp cloth and rub dry. If units are very dirty, add a small amount of household detergent and repeat the process. Do not use solvents or thinner on the surface, as it is coated with a protective paint. Any blemishes and scratches can be touched up using a suitable paint afterwards. We recommend industry-standard touch-up sticks, which match the colour of the powder coating. Large blemishes can only be removed by re-coating the surface.

CLEANING AND MAINTENANCE OF CHROME:

For standard levels of exposure, it is sufficient to occasionally wipe the chrome surface clean using a damp cloth and to polish it dry.

Alternatively, you can also use a cloth soaked in paraffin. Rub the unit with the cloth and then treat with distilled water and polish dry. Occasional use of an industry-standard chrome polish to prevent the unit surface from tarnishing is recommended. When using chrome polish, ensure it does not contain any abrasives, as this could damage the surface.

CLEANING AND MAINTENANCE OF MATT CHROME:

For standard levels of exposure, it is sufficient to occasionally wipe the matt chrome surface clean using a damp cloth and to gently rub it dry without applying pressure. If units are very dirty, add a small amount of household detergent and repeat the process. Please note that no polish can be used for matt chrome, as this would damage the surface. Never use solvents or thinner on the surface. Special maintenance products for matt chrome are available from specialist companies.

CLEANING AND MAINTENANCE OF STAINLESS STEEL:

A damp cloth is sufficient for the daily maintenance of stainless steel. We recommend using microfibre cloths. Clean the stainless steel unit using a damp cloth (with a small amount of household detergent, if required) and polish it using a soft, lint-free cloth. However, use a special stainless steel cleaner several times a month. After cleaning, this will protect the material with a silicone oil protective film. By maintaining the stainless steel, it is easy to remove grease and other dirt. Do not use any abrasive cleaners or solvents. Special maintenance products for polished stainless steel are available from specialist companies.